



COMMANDER / DIRECTOR NAVIGATION





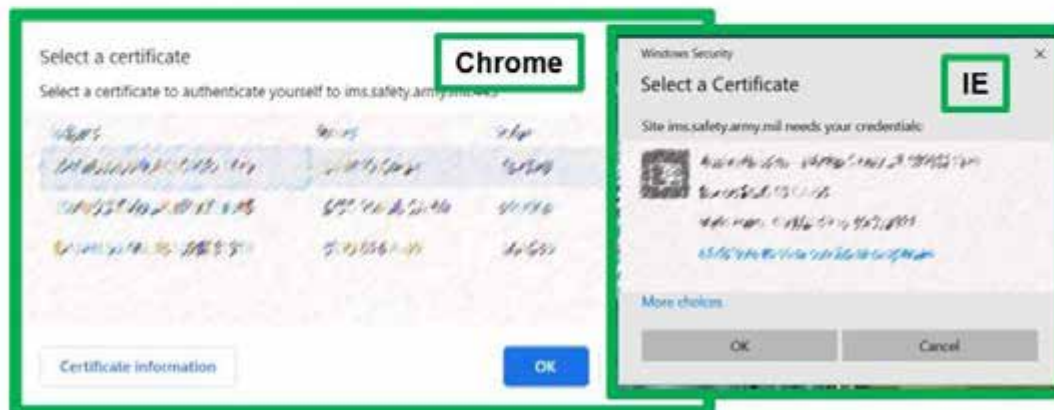
Read "DoD Disclaimer"

DoD Disclaimer

Use of this or any other DoD interest computer system constitutes consent to monitoring at all times. This is a DoD interest computer system. All DoD interest computer systems and related equipment are intended for the communication, transmission, processing, and storage of official U.S. Government or other authorized information only. All DoD interest computer systems are subject to monitoring at all times to ensure proper functioning of equipment and systems including security devices and systems, to prevent unauthorized use and violations of statutes and security regulations, to deter criminal activity, and for other similar purposes. Any user of a DoD interest computer system should be aware that any information placed in the system is subject to monitoring and is not subject to any expectation of privacy.

Confirm

*Click
"Confirm"*



**CAC
Sign In**



Home | FAQ's

U.S. ARMY

ARAP
ARMY READINESS ASSESSMENT PROGRAM

for Soldiers & Employees

Taking a Survey?
Enter your Access Code to get started

Enter Access Code

for Commanders & Directors

Commander or Director?
Enter your Access Code to access dashboard

Enter Access Code

Enter Code then Click "Begin"



Survey Help

for Soldiers

Taking a Survey?

Enter your Access Code to

Enter Access Code

for Commanders & Directors

Commander or Director?

Enter your Access Code to access dashboard

Enter Access Code

Begin

Register Your Organization

Request Higher Command Access Code

Survey Help

Registration Help

Survey Help What to expect

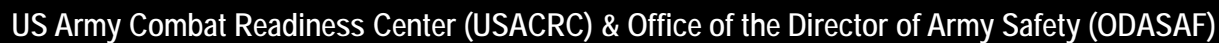
Step 1 Receive Access Code
Unit Commander / Representative will provide access code

Step 2 Enter Access Code
Use the Access Code provided by your Commander or Director

Step 3 Complete Survey
Answer each question within the survey

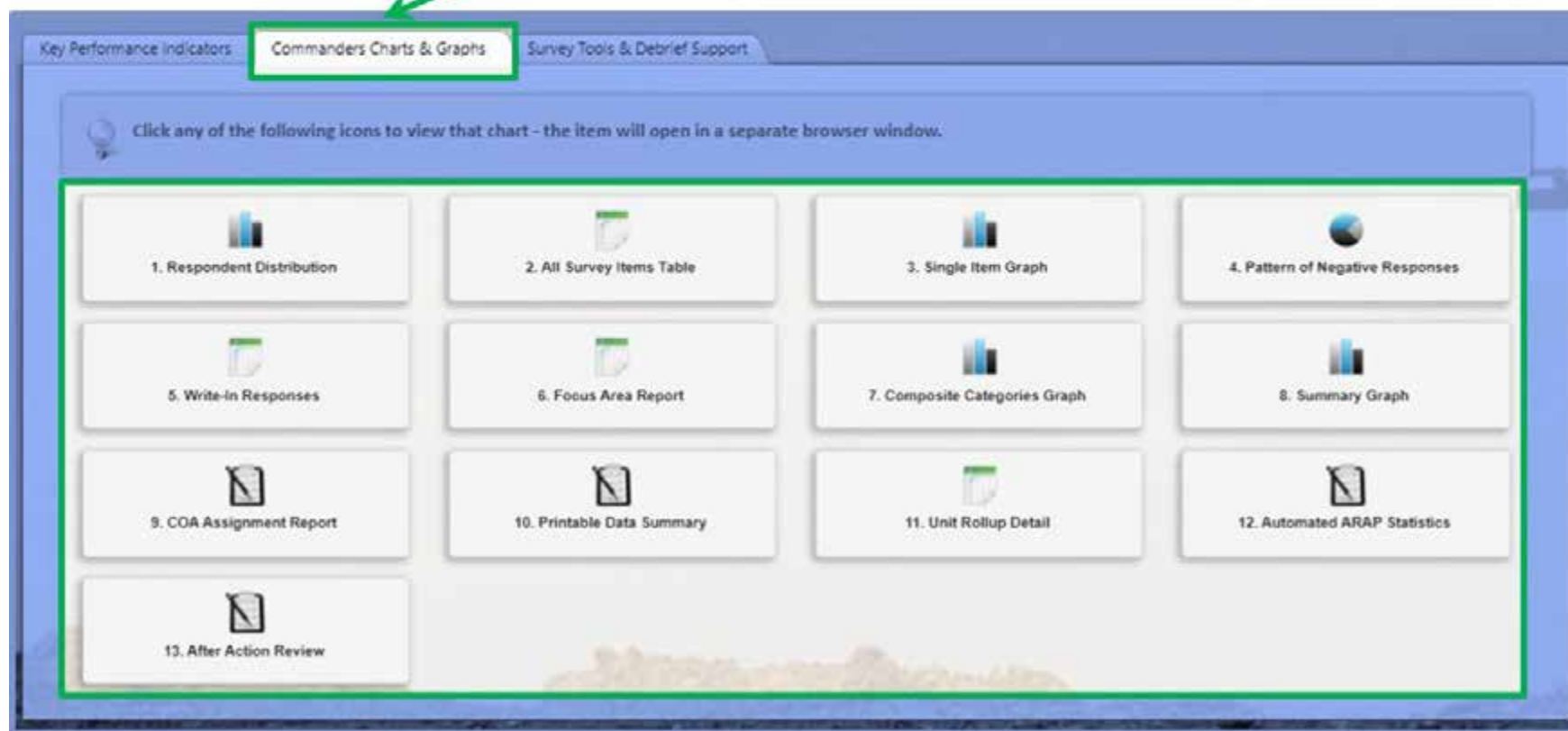
Step 4 Print/ Save/ Email Certificate
When you complete the survey you will receive a certificate

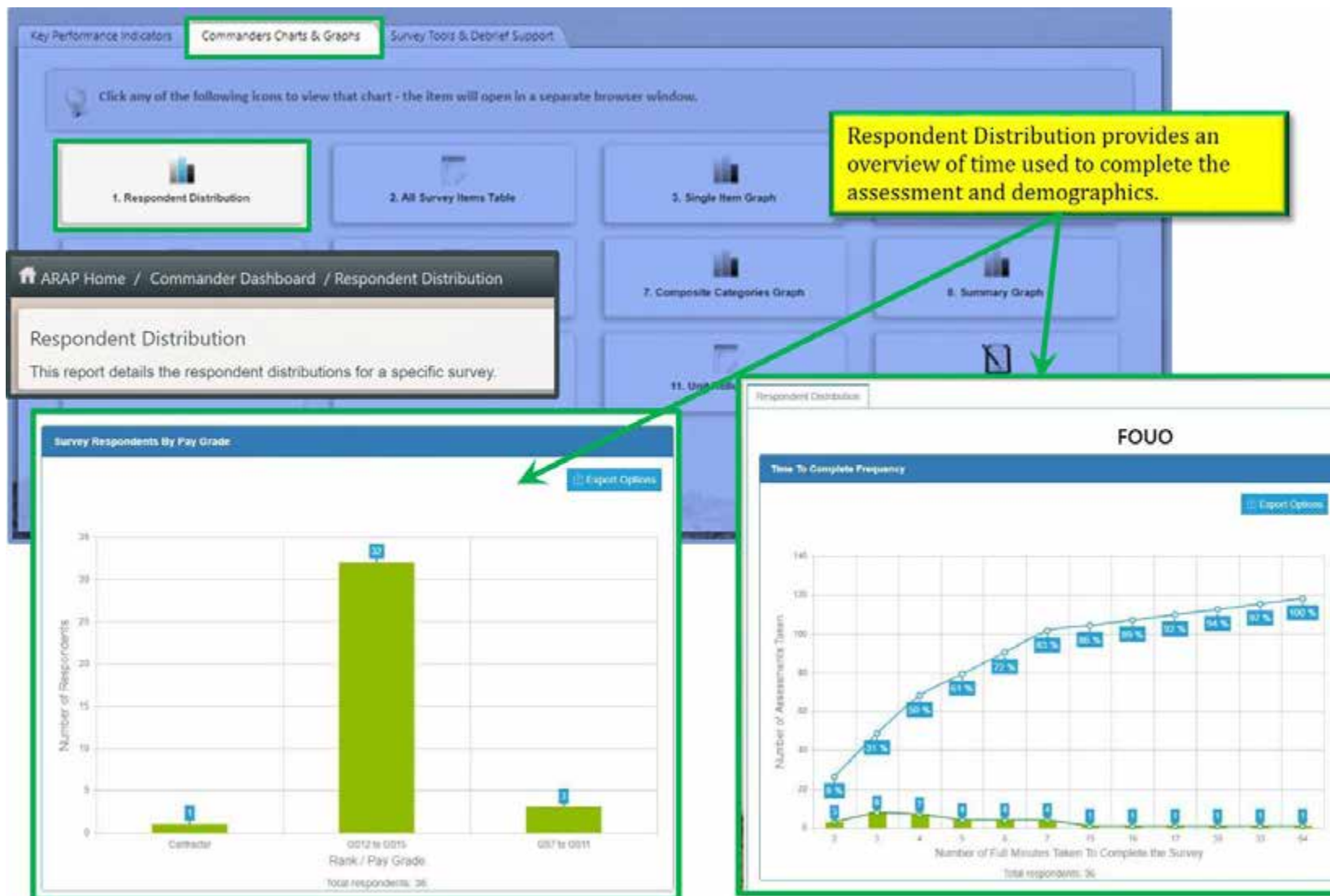






The Commander's Charts & Graphs tab provides access to the charts, graphs, tables and write-in responses for the unit's assessment in menu items 1 – 8. Additional recourses are available in menu items 9 – 13. Each items will be reviewed in the following slides.







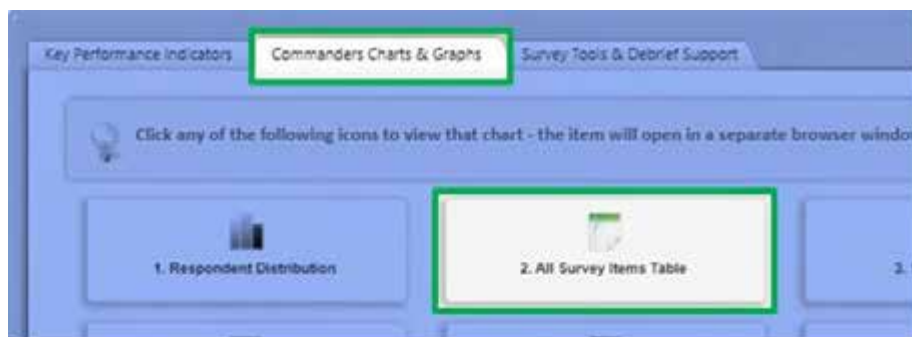
Suspect Data
Checkbox

Suspect Data is defaulted to be included. Unchecking the box will remove the suspect data. The ARAP team recommends removing suspect data

Parameter Options Currently Selected
Parameters

*The Currently Selected Parameters box will appear at the bottom of the page when parameter selections are available.

Parameters	
Start Date:	05/06/2019
End Date:	05/06/2021
Personnel Role:	(All)
Age Range:	(All)
Gender:	(All)
Rank Grade:	(All)
Personnel Status:	(All)
Classification:	(All)
Unit Duration:	(All)
Include Suspect:	true
Since Inception:	false
Division:	(All)
Brigade:	(All)
Corps:	(All)
HQ Cmd:	(All)
Branch:	(All)



ARAP Home / Commander Dashboard / All Survey Items Table

All Survey Items Table

The All Survey Items Table orders by mean score, from largest to smallest, your organization's responses to the survey items. The table also provides you with a visual indication of your organization's responses relative to overall Army responses.

The All Survey Items Table orders by mean score, from largest to smallest, your organization's responses to the survey items. The table also provides you with a visual indication of your organization's responses relative to overall Army responses.

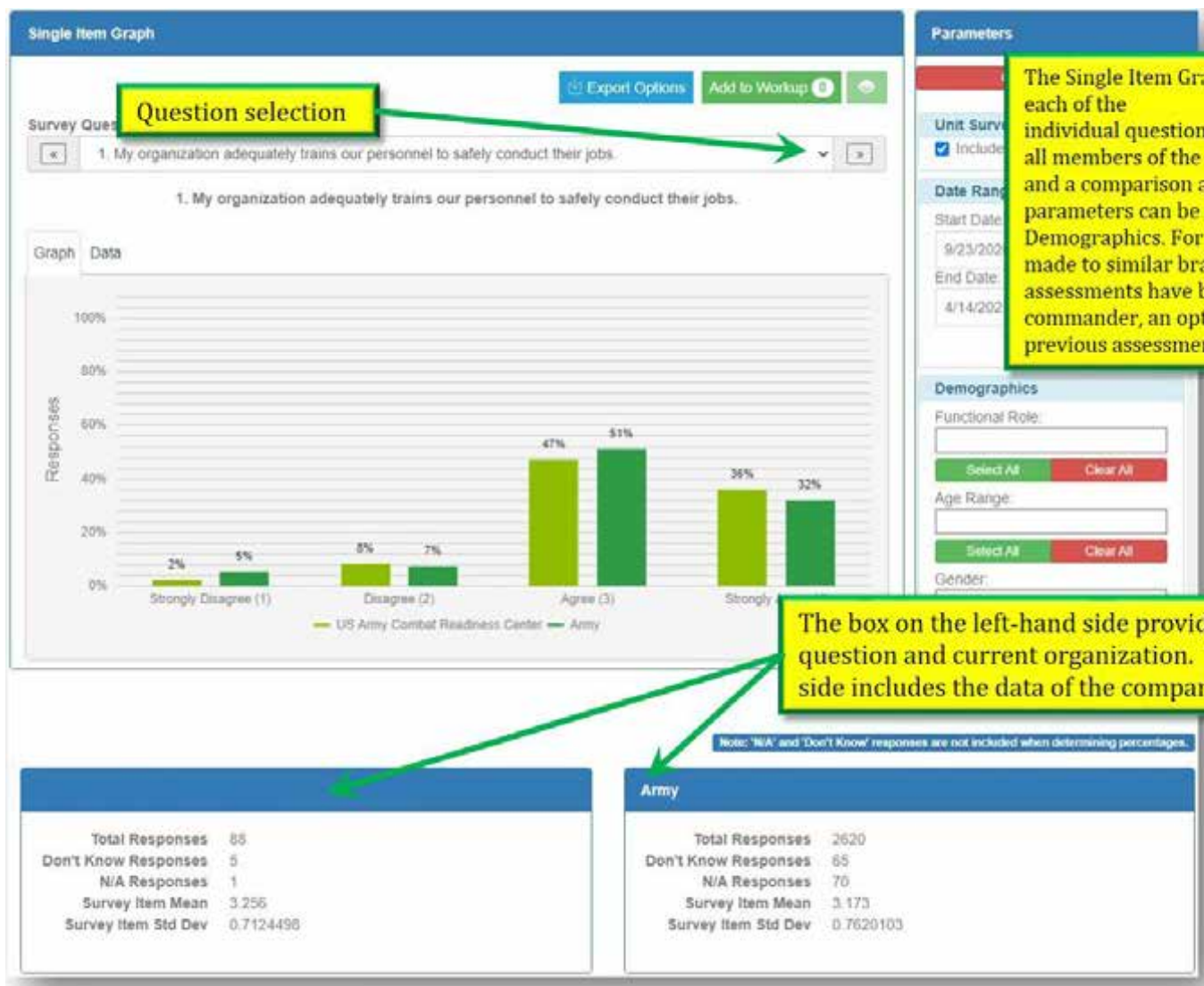
Begin Date: [] End Date: []
☒ Include Support Data

Table of Mean for All Items for US Army Combat Readiness Center

Item	Unit	Functional Role	Mean	Item Score	Flag	Question
119	R	Ground Support/Infantry	3.750	3.221	Green	Personnel publications are correct and used in my organization (AR, TTA, SOP, etc.). (R)
140	R	Ground Support/Infantry	3.750	3.214	Green	Safety decisions are made at the proper levels by the most qualified personnel. (R)
142	R	Ground Support/Infantry	3.750	2.788	Green	My organization effectively communicates safety information. (R)
119	R	Ground Support/Infantry	3.714	3.198	Green	Construction is kept to the bare safety performance. (R)
140	IC	Ground Support/Infantry	3.429	3.151	Green	My organization adequately reviews and updates procedures. (R)
48	IC	Ground Support/Infantry	3.357	3.102	Green	My organization's operating standards, when used, are followed. (R)
55	R	Ground Support/Infantry	3.357	3.102	Green	My organization makes effective use of the most high risk areas. (R)

Legend:
Green: Mean is equal to or greater than comparison's mean.
Yellow: Mean is less than comparison but within one-half standard deviation.
Red: Mean is below one-half standard deviation from comparison's mean.

The All Survey Items Table provides a detailed list of the questions and offers a comparison to the Army's Mean. The flags represent the relationship between the Unit's Mean Score and The Army's Mean Score for each question. Questions may be presented more than once if they were presented to more than one functional role outside of the Common Core Category. The column headers can be used to sort any column. By default, the table is sorted based on the Mean from the highest to lowest scored question based on the current unit's assessment.







To simplify viewing the write-in responses, filters are provided at the top of each column. In the example, the question filter option has been selected. Additionally, each column heading (Category, Question#, Question, Response, and Respondent#) can be selected to sort responses.

Write In Responses

No Question Selected

Clear Filters Export Options Add to Workup

Page 1 of 20 1 - 10 of 281 Items

Category	Question #	Question	Response	Respondent #
Add	Ground Support/Admin	197	What is my organization doing "right" and why?	
Add	Ground Support/Admin	197	What is my organization doing "right" and why?	
Add	Ground Support/Admin	197	What is my organization doing "right" and why?	

Parameters

Clear All Parameters

Unit Survey Misc.

☒ Include Suspect Data

Date Range

Start Date:

Select All

☐ My organization adequately trains our personnel to safely conduct their jobs.

☐ My organization recognizes individual's safety skills.

☐ Standards in my organization are clearly defined.

☐ Standards in my organization are enforced.

☐ Only personnel with appropriate experience/skills train others in my organization.

☐ Breaking SOPs or safety rules is easily corrected.

☐ Senior members, from the top down, incorporate risk management.

☐ Good communication exists within my organization.

☐ My organization has a reputation for high quality performance.

☐ SOPs and safety rules are rare in my organization.

selected

Filter Clear

6032

6037

6040

5234

1 - 10 of 281 Items

Click any of the following icons to view that chart. The item will open in a separate browser window.

1. Respondent Distribution

2. All Survey Data Table

3. Single Item Graph

4. Pattern of Negative Responses

5. Write In Responses

6. Focus Area Report

7. Composite Categories Graph

8. Summary Graph

9. CGA Assessment Report

10. Printable Data Summary

11. Unit Readiness Detail

12. Automated ARAP Feedback

13. After Action Review

Selecting the filter icon shows the filter options for the respective column.



The Focus Areas provides a detailed list of the questions that make up each of the eARAP categories. A comparison of the mean scores between the current assessment and Army is provided for each category.

Focus Areas

[Clear Filters](#)[Export Options](#)[Add to Workup 0](#)

Focus Area	ORG DATA	Army	ARAP Questions
Common Core	3.154	3.100	1, 2, 3, 4, 5, 6, 7, 8, 9, 10, 11, 12, 13, 39, 40, 41, 42, 43, 44, 45, 46, 47, 48, 92, 116
Organizational Climate	3.151	3.022	14, 15, 16, 17, 18, 19, 20, 21, 22, 23, 93, 94, 95, 212
Organizational Processes	3.184	3.069	24, 25, 26, 27, 28, 29, 30, 31, 32, 33, 34, 35, 36, 37, 38, 52, 53, 54, 55, 56, 62, 63, 64, 65, 66, 67, 68, 69, 70, 71, 72, 73, 74
Resources	3.122	2.998	75, 76, 77, 78, 79, 80, 81, 82, 83, 84, 85, 86, 87, 88, 89, 96, 97, 98, 99, 100, 118, 119, 120, 121, 122, 123, 124, 125, 126, 127, 128, 129, 130, 133
Safety Programs	3.101	3.189	102, 103, 104, 105, 106, 171, 172, 173, 174, 175, 176, 177, 178
Supervision	3.191	3.115	43, 107, 108, 109, 110, 111, 112, 113, 114, 115, 131, 132, 133, 134, 135, 140, 141, 142, 143, 144, 145, 146, 147, 148, 149, 150, 151, 152, 153, 154, 159, 160, 161, 162, 163, 164, 165, 166, 167, 168, 169, 170, 208

Parameters

[Clear All Parameters](#)

Unit Survey Misc.
☒ Include Suspect Data

Date Range
Start Date: 9/23/2020
End Date: 4/14/2021
☐ Since Inception

Demographics
Functional Role:



The Composite Categories Graph presents the same information as the Focus Areas in the form of a Graph. This provides a visual representation of the Army's score in each category compared to the current assessment.

Parameters

Clear All Parameters

Unit Survey Misc.

☒ Include Suspect Data

Date Range

Start Date: 9/23/2020

End Date: 4/14/2021

☐ Since Inception

Demographics

Functional Role:

Select All Clear All

Age Range:

Select All Clear All

Gender:

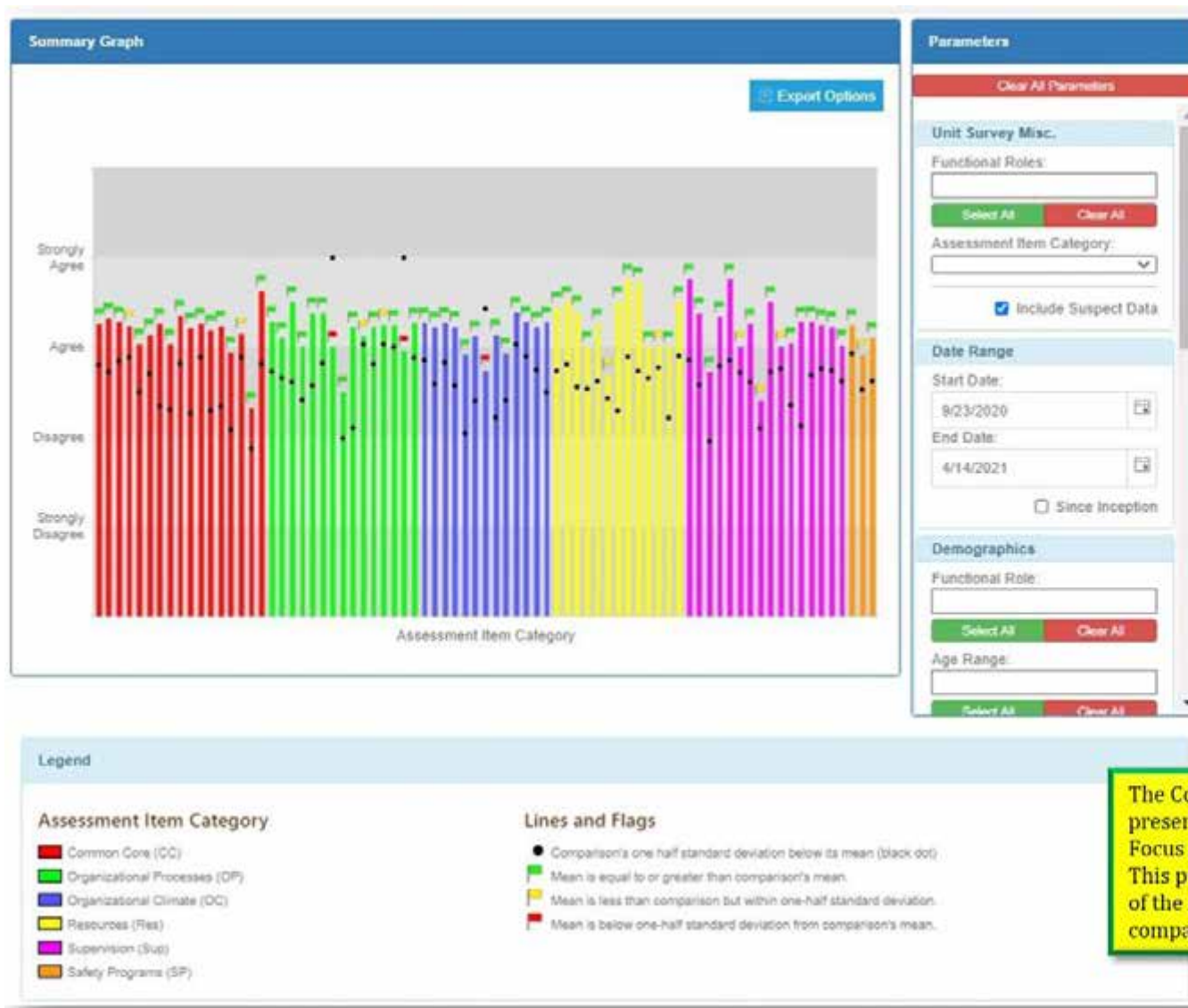
Select All Clear All

Rank / Grade:

Note: 'N/A' and 'Don't Know' responses are not included when determining percentages.

Total Respondents	88
Don't Know Responses	495
N/A Responses	152

Total Respondents	1732
Don't Know Responses	5366
N/A Responses	3696



The Composite Categories Graph presents the same information as the Focus Areas in the form of a Graph. This provides a visual representation of the Army's score in each category compared to the current assessment.



Printable Data Summary

This report provides the target population with statistics and details regarding their organization's participation in the ARAP.

[Export Options](#)

FOUO

US Army Combat Readiness Center

Data Summary.

☒ Include Suspect

Number of Surveys with Respondents:	1
Date of First Survey:	08/23/2020
Date of Last Survey:	09/23/2020
Number of Personnel:	88
Number of Respondents:	88
Respondent Percent:	100%
Overall Mean Score:	3.177
Statistical Confidence Level:	90% to 95%
Number of red flag survey items:	0
Number of yellow flag survey items:	18

Appendixes

Appendix	Product
1:	Course of Action Strategies Compiled with Respect to the "Cautionary" (Red Flags) Survey Items for US Army Combat Readiness Center.
2:	Course of Action Strategies Compiled with Respect to the "Precautionary" (Yellow Flags) Survey Items for US Army Combat Readiness Center.
3:	Summary Graph of Mean Scores for All Respondents of All Items Compared with Means for US Army Combat Readiness Center.
4:	Composite Category Mean Scores for US Army Combat Readiness Center as Compared with Mean Scores for All Respondents.
5:	Table of Mean and Standard Deviation for US Army Combat Readiness Center of All Items Compared with All Respondents Listed with Most Favorable Scores First and least Favorable Scores Last with Respect to Unit's Scores.
7:	Write in response selections for US Army Combat Readiness Center.

Appendix 1. Course of Action Strategies Compiled with Respect to the "Cautionary" (Red Flags) Survey Items.

Question 36.	Common Core.
My organization is not over-committed.	
Question 41.	Common Core.
Leaders/Supervisors in my organization prohibit cutting corners to get a job done.	
Question 64.	Ground Operator.
My organization's operating standards when deployed are the same as the operating standards when at home base.	
Question 65.	Ground Operator.
Additional duties have helped the overall readiness in my organization.	
Question 77.	Civilian DAC.
I am trained on emergency response procedures.	
Question 208.	Civilian DAC.
Inspections of my work and operations are made at regular intervals.	

The Printable Data Summary provides the capability to export selected data from the assessment to PDF format using the Export Options button in the top right-hand corner.



The Unit Rollup Detail provides the brief administrative data in the example below.

Unit Rollup Detail

This report displays status information for units enrolled in the ARAP program.

FOUO

US Army Combat Readiness Center

Export Options

1

Page: 1 of 1 [Go](#) Page size: 1 [Change](#) Item 1 to 1 of 1

Battalion	UIC	Branch	Location	Registration Date
USACRC	W0J7AA	HQ Staff	Fort Rucker, Alabama	9/23/2020 1:59:21 PM

1

Page: 1 of 1 [Go](#) Page size: 1 [Change](#) Item 1 to 1 of 1

FOUO



Number of units ^Debriefed in eARAP
during reporting period (by
component):

AD	347
NG	120
AR	69
Total	536

Personnel Enrolled	139,011
Surveys Completed	108,997

WITH SUSPECT DATA

eARAP GROUP	GROUP MEAN RANGE	CLASS A	FATAL	CLASS B
Top 25%	3.516 3.282-3.750	3	2	0
2nd	3.217 3.156-3.281	7	6	0
3rd	3.092 3.030-3.155	4	5	5
Bottom 25%	2.792 2.555-3.029	22	17	20

Date Prepared

17 March 2022 (for 17 March 2020 - 17 March 2022)

*Unit's most current debrief if debriefed more than once.



AFTER ACTION REVIEW



The After Action Review page provides commander's the opportunity to submit comments about the assessment, eARAP program and debrief.



ARAP Home / Commander Dashboard

Commander Dashboard

Welcome to your Commander Dashboard. Please use the management console selections below to launch the desired console.

Assessment Progress: **Complete**
Estimated Completion Date: 01/05/2021 (Contact ARAP Team to request an adjustment to this date.)
Unit: USACRC **Branch:** HQ Staff

Key Performance Indicators | Commanders Charts & Graphs | **Survey Tools & Debrief Support**

1. Course of Action (View & Submit)

2. Free Text Search Tool

3. Tools & Information

4. Debrief Support

5. Debrief Certificate (View & Print)



COA Viewer

FOUO

This grid allows you to view survey questions and their associated course(s) of action. Click the arrow beside a survey question to display its associated courses of action.

*The description filter is for the course of actions retrieved for each question.

Course Of Action Description:

Question Number	Question Text	Question Type	Question Category	Answer Type
1	My organization adequately trains our personnel to safely conduct their jobs.	Ranking	Common Core	One Answer (Radiobutton)

Page: 1 of 12 Go Page size: 10 Change Item 1 to 10 of 116

Course of Action is

Course of Action Description	Status

Here, courses of action that have been previously submitted for each question can be viewed in the COA Viewer tab by expanding the arrow to the left of the selected question (left-hand image). Courses of action can be submitted in the COA Submitter tab by selecting the + to the left of the selected question, filling in the text box and selecting submit (right-hand image).

COA Submitter

FOUO

Enter your Course of Action Description then select at least one survey question by clicking the green + icon. To submit the course of action click the Submit button.

1. Enter Suggested COA*

Course of Action Description

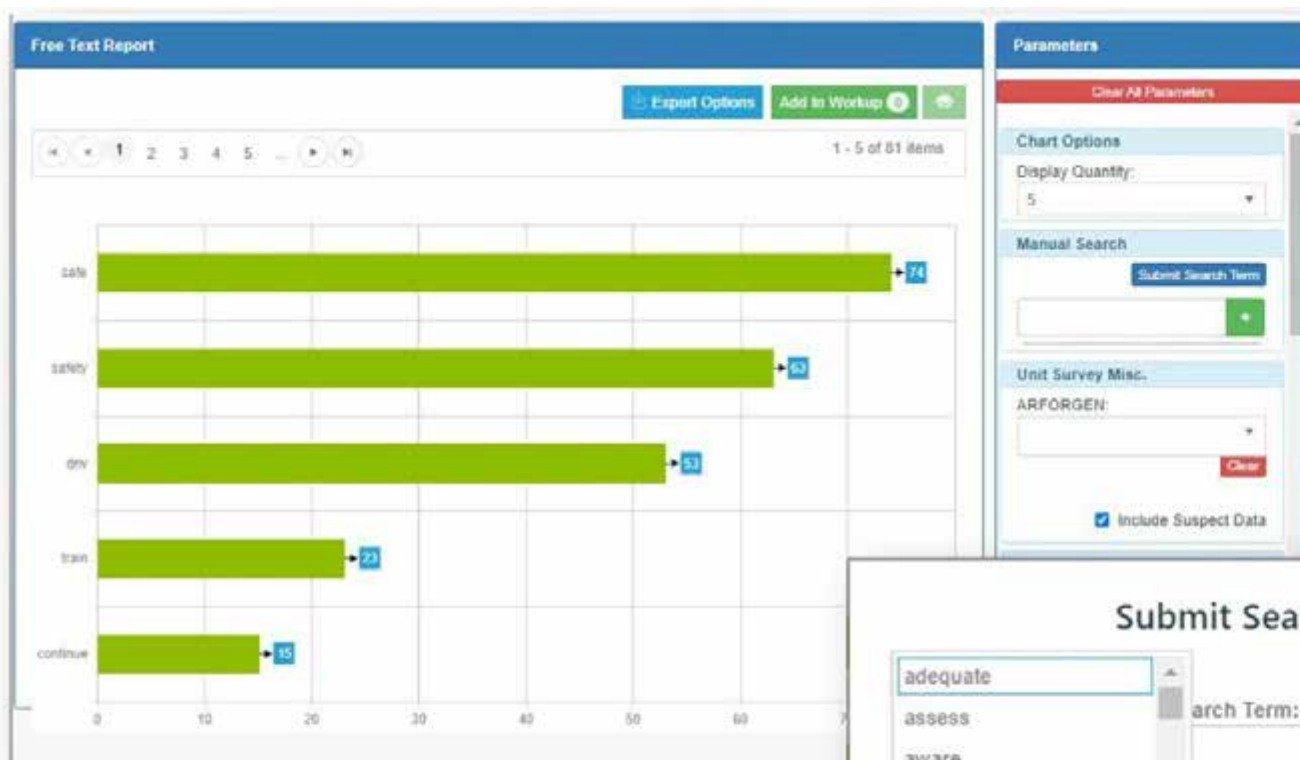
2. Select Survey Questions

Question Number	Question Text	Question Type	Question Category	Answer Type
1	My organization adequately trains our personnel to safely conduct their jobs.	Ranking	Common Core	One Answer (Radiobutton)
2	Safety policies are clearly defined in my organization.	Ranking	Common Core	One Answer (Radiobutton)

Page: 1 of 12 Go Page size: 10 Change Item 1 to 10 of 116

3. Review Selected Questions and Submit

Question Text
My organization adequately trains our personnel to safely conduct...



Free Text Search provides a report of the number of times monitored words are used in an assessment. Words such as kill, bomb, etc. are considered High-Risk Words. When these words are used, the eARAP team is notified. After assessing the submission, a determination is made if immediate commander notification is required. To view all words monitored, or recommend additional words select the blue, submit search term button. This will call up the box in the right-hand image.

Submit Search Term

Export Options

adequate

assess

aware

bomb

brief

car

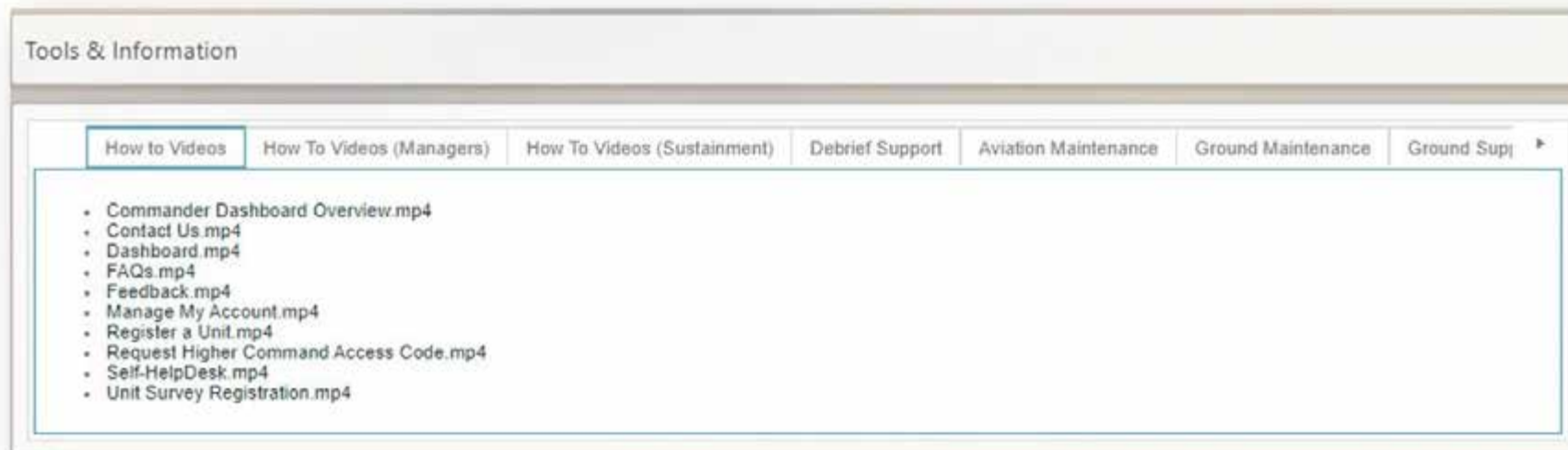
care

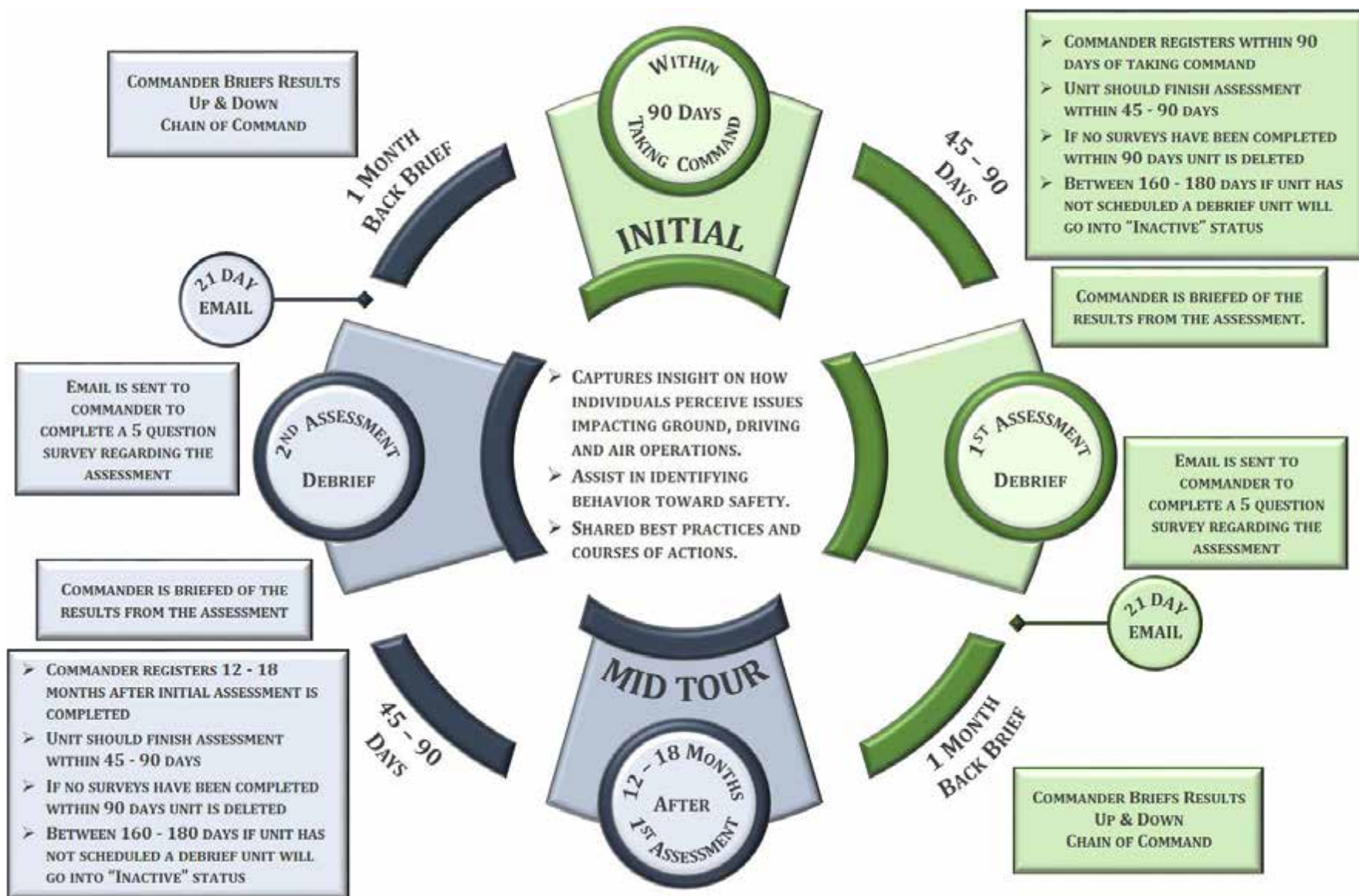
Search Term:

Submit Cancel



Tools & Information provides resources such as those listed in the image below.







US ARMY COMBAT READINESS CENTER

READINESS THROUGH SAFETY (U)

CONTACT INFORMATION



PRI: (334) 255 - 0632 / 3759

ALT: (334) 255 - 9579 / 2643 / 9362 / 3585

DSN: 558 - XXXX

DSN OCOUNS: 312 - 558 - XXXX

usarmy.rucker.hqda-secarmy.mbx.e-arap@army.mil

U.S. Army Combat Readiness Center
Bldg. 4905, Ruf Ave
Fort Rucker, AL 36362-5363

